

LIMITLESS POSSIBILITIES



MPI

EXPERIENCE THE DIFFERENCE

MPI is the worldwide leader in wax-room and ceramic core equipment and the acknowledged leader in wax-room innovations. MPI has developed and introduced more systems and products than all its competitors combined and offers wax-room solutions that can't be found anywhere else.

WAX INJECTORS

MPI's wax and ceramic injection machines are the most sophisticated in the industry and generate higher casting yields, more patterns per hour, reduced scrap, and increased productivity. They're also the most reliable in the industry, which means higher system availability, lower maintenance costs, and better performance.

AUTOMATION

MPI is at the forefront of automation, having automated some of the most complex processes in the investment casting industry for well over a decade. MPI's automated injection and assembly cells provide the capability to make and assemble wax patterns from the simplest commercial parts to complex patterns required by the medical and aerospace industries, including single crystal turbine blades. MPI can automate a single process or implement full-scale automation for your facility.



SA55-25-24
C-Frame Wax Injector



SA20-06-06
Automated Pattern Injection Cell

MPI TECHNOLOGY CENTER

MPI is at its best when it can innovate. MPI prides itself at being able to look at problems and then customize solutions that help clients achieve their goals. The MPI Technology Center is a state-of-the-art wax room that allows MPI to do just that. Located at MPI's world headquarters in New York, the Technology Center is a hub of innovation, ingenuity, and problem solving. Customers and suppliers visit this sophisticated facility to discover new ways to solve their unique wax-room challenges and to experience a totally automated facility in full operation.

MPI EXCELS

Most important, return on investment (ROI) is where MPI excels. MPI supports its customers' bottom line with creative, customized products and services that fit their evolving needs. Through collaboration, we innovate, design, build, and integrate solutions that deliver measurable results.

MPI = ROI



HIGH PRESSURE WAX INJECTOR

MPI 74-1500

MPI 74-1500

High Pressure Wax Injector

MPI MODEL 74-1500, A HIGH PRESSURE METAL MOLD WAX INJECTOR WITH VACUUM

The MPI 74-1500 is designed to produce accurate, repeatable wax patterns. It utilizes high-pressure metal mold technology resulting in significant advantages over other injection techniques.



INCREASE YOUR PATTERN TO PATTERN CONSISTENCY

Innovative Features:

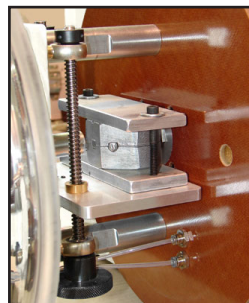
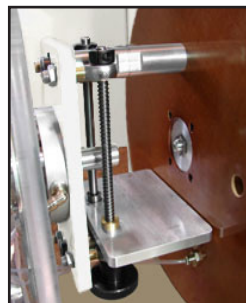
- Compact self-contained unit
- User friendly front control panel
- Precise control of wax temperature, pressure, flow, and time
- Controls both wax reservoir and nozzle temperatures
- Mold is clamped external to the machine
- The mold is held against the nozzle pneumatically
- High-pressure wax injection up to 1500 psi (103 bar)
- Fully automatic cycle
- Can inject with or without vacuum
- Vacuum chamber encloses mold and clamp



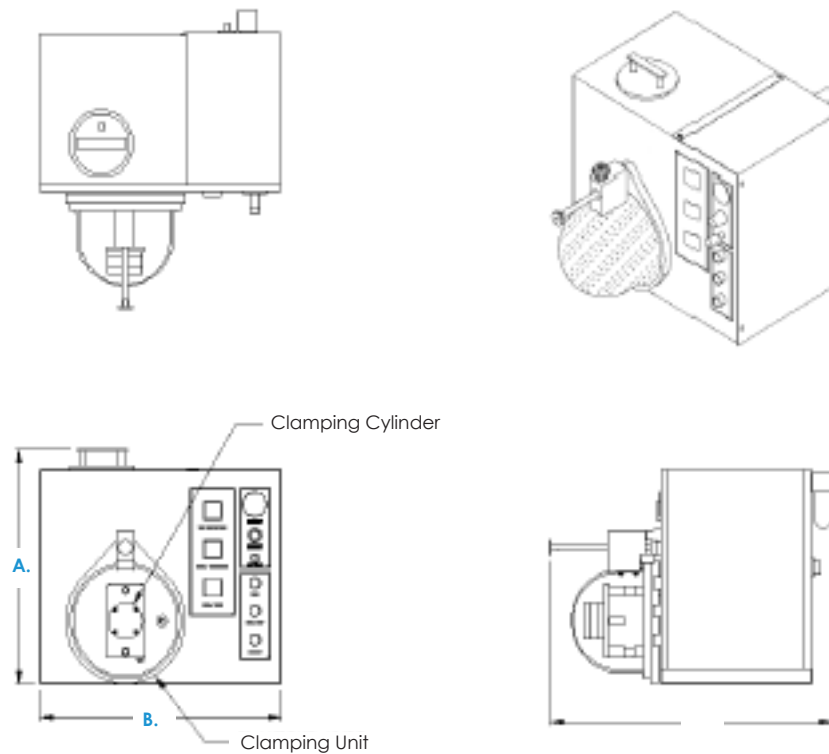
MORE CONTROL
Controls for wax temperature at reservoir and nozzle, injection pressure, cycle time, wax flow, easy to read and simple to adjust.

MACHINE OPERATION

- Clamp the mold with customer supplied clamp
- Locate mold against the nozzle
- Start the automatic cycle
 - A. Using Vacuum - close the vacuum chamber which initiates the auto cycle
 - B. Without Vacuum - push the start button



DS-74-1500-09-18-20



	US (60Hz)	METRIC (50Hz)
A. Overall Height	24 in	610 mm
B. Overall Width	26 in	660 mm
Wax Reservoir Capacity	10 lb	4.5 kg
Single Shot Capacity	3.0 cu in / .1 lb	.05 l / .04 g
Injection Pressure (Wax)	50 - 1500 psi	3.5 - 103 bar
Injection Rate	Adjustable	Adjustable
Injection Time	0 - 99.9 sec	0 - 99.9 sec
Electrical Standard	120V, 60Hz, 1ph	110V, 50Hz, 1ph
Air Requirements	120 psi	8.3 bar
Machine Weight	189 lb	71 kg

Notes: Optional equipment may alter the machines overall dimensions, weight, and power requirements. Contact MPI sales department for additional information. We reserve the right to change specifications without notice.