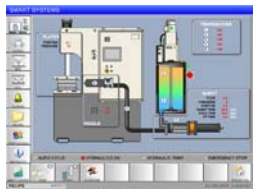


The Model 35 Series wax injector is a 4 post hydraulic press designed for **Large Pattern Production**. The machine is available in 100, 200, and 300 ton clamping forces. The machine is supplied with shuttle tables and remote operator controls, ergonomic for the operator, providing unobstructed access to the wax die.

The unit is fitted with an impressive list of standard features and a wide range of options are available. Our engineering support staff is prepared to help determine the configuration that meets your needs and optimize your throughput.

#### Process Control

All MPI machines are equipped with **Smart System Process Controls** that provide state-of-the-art process control utilizing user-friendly Windows-based injection control software that features an intuitive touch-screen display. Our Smart



System consistently monitors and controls all variables in real time against your pre-established baselines for wax temperature, wax flow, wax pressure, injection time and viscosity, resulting in patterns that are consistent and of the highest quality. This technology eliminates the possibility of accidentally making an out-of-tolerance wax pattern.

#### The MPI 35 Features:

- Injection cylinder: 1130 cu. in. - 18.5 liter
- Smart Controls
- Nozzle: Horizontal FlexNoz®
- 3-Axis nozzle positioner
- Wax Conditioning reservoir with level control
- Accurate 5-zone Wax Temperature control
- CE Conformity
- Hydraulic Shuttle tables - One or Two Shuttles
- Platen Heating and Cooling
- Operator Interface Terminal

#### Optional Features:

- Second Conditioning reservoir with level control
- QuickChange Die Clamping
- T Slots - parallel or radial
- Hydraulic Pattern Ejection
- Wax Melter with level control
- Wax pellet Vacuum Loader
- Platen Guarding - Powered
- Jib Crane
- Many more ...



**4 POST WAX INJECTOR**



## Features and Options

### T slots

*T slots on each platen provide full coverage die clamping and eliminate stripped threads.*



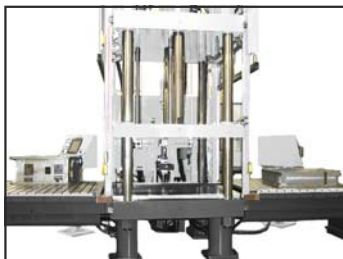
### Hydraulic Pattern Ejection

*Controlled pattern removal from the lower stationary platen.*



### Two Shuttle Tables

*Increase machine utilization by injecting one die while performing die disassembly and pattern removal on a second die.*



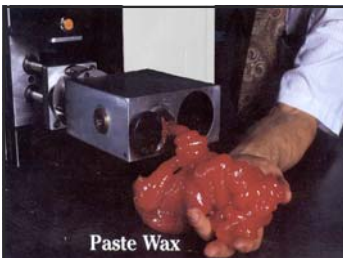
### Jib Crane

*The unique combination of Jib Crane and Hydraulic Shuttle Table allow quick, safe pattern removal and die changeovers by a single operator.*



### Paste Wax

*Accurately conditions wax to any viscosity from liquid to paste, providing consistency from pattern to pattern regardless of the input wax temperature.*



### Three Axis Nozzle Positioning

*Total alignment*

*Motor driven x-y-z nozzle positioning allows for die designs with the most direct wax flow path.*

