

AUTOMATIC HORIZONTAL WAX INJECTOR

...the innovative, high volume wax injector designed to increase wax pattern quality, quantity, throughput, and ...your bottom line.

The MPI 45 incorporates the latest MPI systems technology in a compact, automated, cost-efficient unit, designed to increase throughput. Everything about this unit saves you time and money.

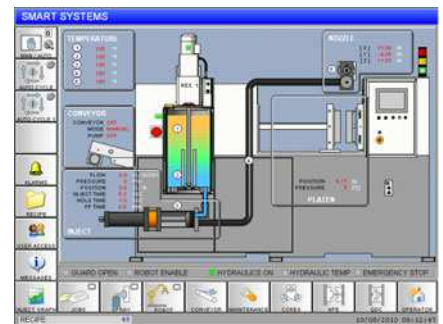
Check out how MPI's Integrated Robotic Systems offer automated pattern processing from tool to tray, trimming, and coming soon, optical inspection. MPI's Integrated Robotic Systems will dramatically improve the cost effectiveness and efficiency of your wax room.



Model 45-12

Process Control

All MPI machines are equipped with **Smart System Process Controls** that provide state-of-the-art process control utilizing user-friendly Windows-based injection control software that features an intuitive touch-screen display. Our Smart System consistently monitors and controls all variables in real time against your pre-established baselines for wax temperature, wax flow, wax pressure, injection time and viscosity, resulting in patterns that are consistent and of the highest quality. This technology eliminates the possibility of accidentally making an out-of-tolerance wax pattern. No one else even comes close.



Standard Models

MPI 45-12 12 ton (10.7 metric tons) 30" (762 mm) daylight

MPI 45-25 25 ton (22.3 metric tons) 35" (889 mm) daylight