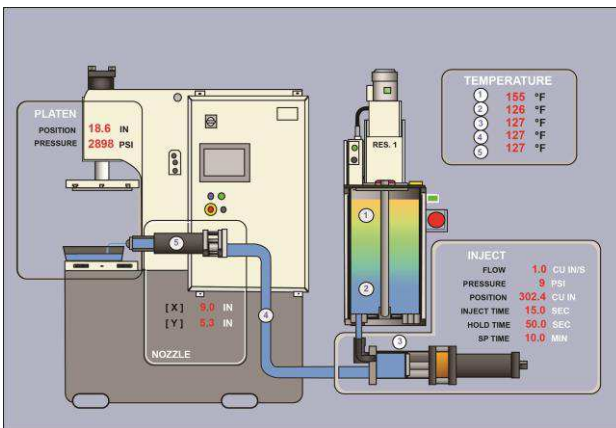


## Injection Cylinder Purge

The injection cylinder can be emptied by pressing and holding the PURGE button. The wax in the injection cylinder will be purged back to the CONDITIONING RESERVOIR.

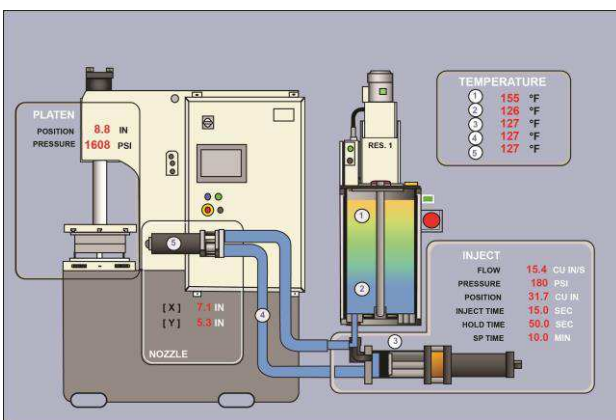
This is used when the press will sit idle for an extended time preventing settling in the injection cylinder and allows for conditioned wax the next time you need to use the press.



## Nozzle Purge

A nozzle purge is used to purge wax from the entire injection system through the FLEX-NOZ® injection nozzle. Fresh wax from the conditioning reservoir is first manually pulled into the injection cylinder and then by pressing and holding the purge button it is purged out of the FLEX-NOZ® injection nozzle.

This may be used at the start of the shift or other extended down times (such as after a break) so that you will have fresh wax for your first injection.



## MPI Smart Purge

SMART PURGE (previously known as Fixed Purge) is an option exclusively offered on MPI's presses. It is part of the machine's automatic cycle and does not require operator input. The need to perform a nozzle purge is eliminated. The injection cylinder pulls in a fixed volume of fresh wax from the CONDITIONING RESERVOIR then the injection cylinder purges that wax through the entire injection system to the FLEX-NOZ® injection nozzle and back to the CONDITIONING RESERVOIR.

After the SMART PURGE cycle, the injection cylinder is refilled from the CONDITIONING RESERVOIR and the injection cycle will start to fill the wax die automatically with fresh wax producing a quality pattern on the first injection. All of this without removing your die, slowing down operations or causing waste from scrap parts.