

Portable Injection Graphing Unit

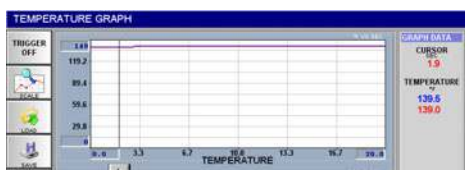
PROCESS VISION

Measures, Records, and Displays (from any wax injector):

- *Wax Temperature*
- *Wax Flow*
- *Wax Pressure*

*Machine to Machine
Calibration*

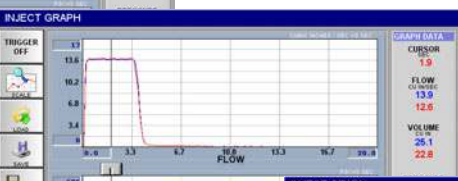
*Transfer wax dies from one
injector to another, with
repeatable results*



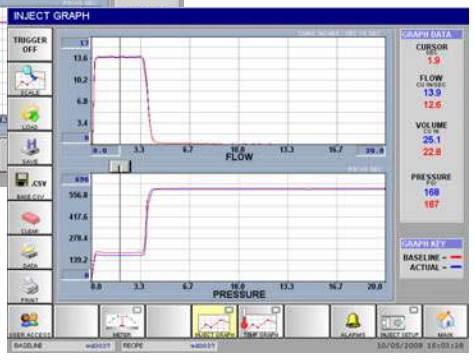
*WAX TEMPERATURE
at the nozzle*



Senses Wax Pressure at the nozzle



WAX FLOW



WAX PRESSURE

MPI's Model 20-20 is a portable wax injection graphing unit that measures, records, and displays wax temperature, wax flow, and wax pressure. For the first time in the industry; there is a product that can duplicate and transfer the injection process from one wax injector to another by eliminating the injector's 'personality'.



Model 20-20 Graphing Unit connected to a MPI Model 55 Wax Injector

1. 20-20 Base Unit Features

- Quick setup from injector to injector
- 12" Color Touch Screen technology
- Easy to use menus supplied in multiple languages
- Internal Data Storage for quick retrieval
- Stores 4000 injections
- Network ready
- Machine Calibration / Offsets

2. Wax Temperature Sensing

- Quick connect to injection nozzle of the injector
- Senses wax temperature at the nozzle tip as it enters the wax die
- Real Time Graphing

3. Wax Flow and Pressure Sensing

- Quick connect to the injection cylinder hydraulics for sensing wax flow and wax pressure
- Real Time Graphing

4. Connectivity

- Connect to all brands of hydraulic wax injectors (including Programmable Injection)

Wax Pressure Calibration Unit

- Senses wax pressure at the nozzle (Optional — Not Shown)

