

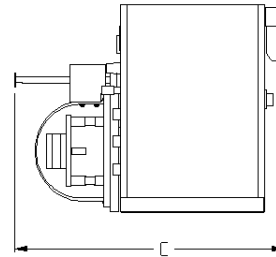
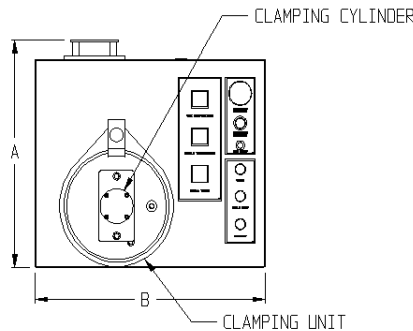
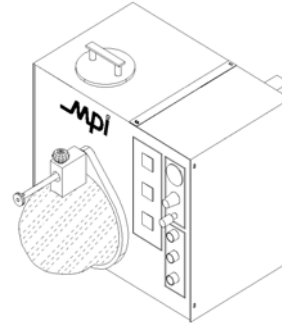
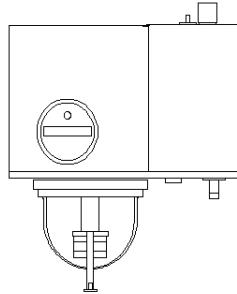
Jewelry Wax Injector with Vacuum

MPI 74-1500

SPECIFICATIONS

Featuring:

- Fully Automatic Cycle can be operated with or without vacuum
- 2 Time Proportioning Temperature Controllers
- Wax Reservoir / Injection Nozzle



Model 74-1500

	US (60 Hz)	METRIC (50 Hz)
Wax Reservoir Capacity	10 lb	4.5 kg
Single Shot Capacity	3.0 cu in / .1 lb	.05 l / .04 g
Injection Pressure	50 – 1500 PSI	3.5 – 103 bar
Injection Rate	Adjustable	Adjustable
Injection Time	0 – 99.9 sec	0 – 99.9 sec
A. Overall Height	24 in	610 mm
B. Overall Width	26 in	660 mm
C. Overall Depth	31 in	787 mm
Max Die Size (L x W x H)	5 in x 6 in x 3 in	127 mm x 152 mm x 76 mm
Electrical Standard	120V, 60 Hz, 1ph	220V, 50 Hz, 1ph
Power Requirement	.3 KVA	.3 KVA
Air Requirement	120 PSI	8.3 bar
Vacuum Requirement	25 in of Hg	635 mm of Hg
Vacuum Supply Hose	.75 in Dia.	20 mm Dia.
Machine Weight	189 lb	71 kg
Shipping Weight	275 lb	102 kg

Notes: Optional equipment may alter the machines overall dimensions, weight, and power requirements. Contact MPI sales department for additional information. We reserve the right to change specifications without notice.

SS74-1500-0108

MPI Incorporated

165 Smith Street Poughkeepsie, NY 12601

Tel: (845) 471-7630 Fax: (845) 471-2485

www.mpi-systems.com

sales@mpi-systems.com