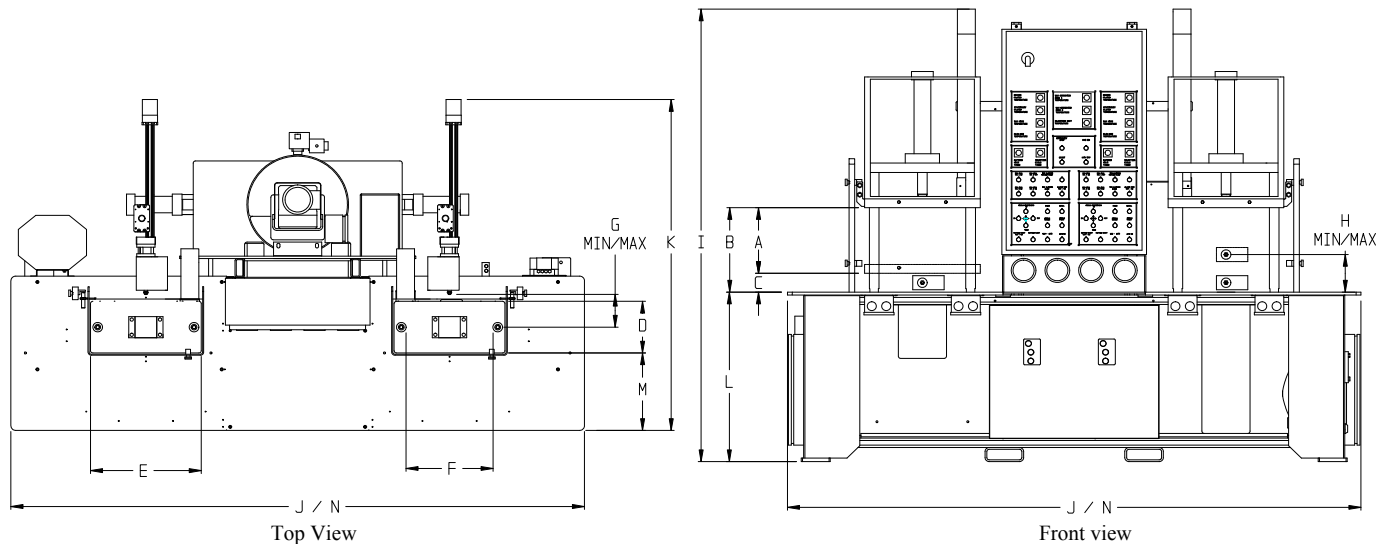


Two Station Wax Injector

MPI 105-12

SPECIFICATIONS:



Model 105-12

	US (60 Hz)	METRIC (50 Hz)
Clamp Force	12 ton	10 ton
Platen Close Rapid	4 in/sec	85 mm/sec
Platen Close Slow	1.0 in/sec	21 mm/sec
Platen Speed Open	2.4 in/sec	51 mm/sec
A. Stroke	14 in	355 mm
B. Daylight Maximum	18 in	457 mm
C. Daylight Minimum	4 in	102 mm
D. Depth of Platens	12 in	305 mm
E. Width of Platens	24 in	610 mm
F. Distance Between Columns	18 in	457 mm
G. Nozzle In/Out Adjustment	0 - 7 in	0 - 178 mm
H. Nozzle Up/Down Adjustment	2.25 - 8 in	57 - 203 mm
I. Overall Height	96 in	2438 mm
J. Overall Width	119 in	3023 mm
K. Overall Depth	71 in	1797 mm
L. Platen to Floor	36 in	919 mm
M. Work Area Depth	16 in	406 mm
N. Work Area Width	119 in	3023 mm
Die Mount Holes	3/8-16	M10
Wax Reservoir Capacity	30 gal	113 l
Wax Reservoir Cooling Capacity	200 lb/hr @ ΔT of 30°F	90 kg/hr @ ΔT of 15°C
Single Shot Capacity	75 cu in	1.2 l
Injection Pressure	50 - 1000 PSI	3.4 - 69 bar
Injection Rate	0 - 15 cu in/sec	0 - .2 l/sec
Injection Time	0 - 999 sec	0 - 999 sec
Nozzle Tip	3/8 in radius	9.5 mm radius
Hydraulic Reservoir Capacity	20 gal	76 l
Hydraulic Cooling Water	2.5 GPM@65°F	9.4 l/min@18°C
Electrical Standard	460V,60Hz,3ph	380V,50Hz,3ph
Power Requirement	19.5 KVA	19.5 KVA
Air Requirement	80 PSI	5.5 bar
Machine Weight	5,500 lb	2,495 kg

Notes: Optional equipment may alter the machines overall dimensions, weight, and power requirements. Contact MPI sales department for additional information. We reserve the right to change specifications without notice.

SS10512-0108

MPI Incorporated

165 Smith Street Poughkeepsie, NY 12601
 Tel: (845) 471-7630 Fax: (845) 471-2485
 sales@mpi-systems.com
 www.mpi-systems.com