

MPI 35

Large volume wax injection designed for Big part production.

The MPI 35 is an open 4-Post designed to accommodate all die designs and sizes. Operator controls are ergonomically located for efficient operation. The MPI 35 is available in three sizes with clamping forces of 100, 150, 200, and 300 tons (91, 136, 181, and 272 tons metric).

The unit is fitted with an impressive list of standard features and a wide range of options are available. Our engineering support staff is prepared to help determine the configuration that meets your needs and will optimize your throughput.



The MPI 35 Features:

- Injection cylinder: 1130 cu. in. -18.5 liter
- Smart Controls
- Nozzle: Horizontal FlexNoz®
- 3-Axis nozzle positioner
- Wax Conditioning reservoir with level control
- Accurate 5-zone Wax Temperature control
- Injection cycle timer
- Pattern hold timer
- CE Conformity
- Hydraulic Shuttle Tables One or Two Shuttles
- Platen Heating or Cooling
- Remote OIT: Operator Interface Terminal

Optional features:

- Second Conditioning reservoir with level control
- QuickChange Die Clamping
- Tee Slots - parallel or radial
- Hydraulic Pattern Ejection
- Wax Melter
- Wax Vacuum Loader
- Platen Guarding - Powered
- Second Injection Station with No Wax contamination
- Fixed Purge
- Jib Crane

- Flexible 3-Piece Modular Design: Customer Specified Layout

Consistent, optimized wax quality is supplied by the MPI wax conditioning reservoir and five-zone temperature control. The result is consistent wax patterns and increased throughput.

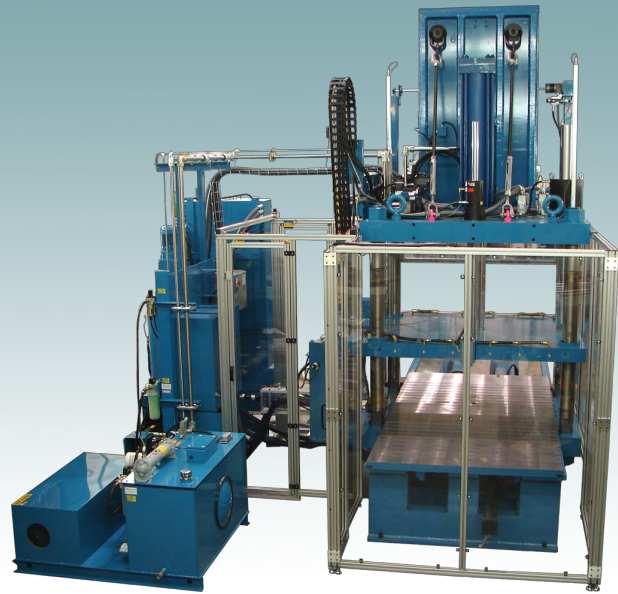


MPI 35-100	US	Metric
Clamp Force	100 ton	91 ton
Daylight Max	42 in.	1067 mm
Platen Width	48 in.	1219 mm
Injection Pressure	50 - 1000 PSI	3.5 - 70 bar
Single Shot Capacity	1130 cu. in.	18.5 liters
MPI 35-150	US	Metric
Clamp Force	150 ton	136 ton
Daylight Max	42 in.	1067 mm
Platen Width	48 in.	1219 mm
Injection Pressure	50 - 1000 PSI	3.5 - 70 bar
Single Shot Capacity	1130 cu. in.	18.5 liters
MPI 35-200	US	Metric
Clamp Force	200 ton	181 ton
Daylight Max	42 in.	1067 mm
Platen Width	48 in.	1219 mm
Injection Pressure	50 - 1000 PSI	3.5 - 70 bar
Single Shot Capacity	1130 cu. in.	18.5 liters
MPI 35-300	US	Metric
Clamp Force	300 ton	272 ton
Daylight Max	48 in.	1219 mm
Platen Width	60 in.	1524 mm
Injection Pressure	50 - 1000 PSI	3.5 - 70 bar
Single Shot Capacity	1130 cu. in.	18.5 liters

We reserve the right to change specifications without notice

MPI 35

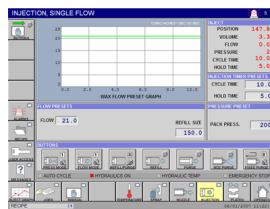
SEMI-AUTOMATIC 4-POST WAX INJECTOR



Optional Features

Smart Controls

Real time graphical representation of pattern cycles compare wax flow and pressure data to predetermined baselines. Adjustments are intelligently introduced if needed. This significantly reduces set up time, and is network ready.

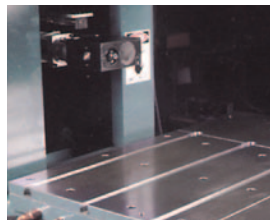


Hydraulic Pattern Ejection

Controlled pattern removal from the lower stationary platen.

Tee Slots

Three parallel tee slots per platen, running perpendicular to the nozzle, provide full coverage die clamping and eliminate stripped threads.



Jib Crane

The unique combination of Jib Crane and Hydraulic Shuttle Table allow quick, safe pattern removal and die changeovers by a single operator.

Second Station

Adding a second injection system causes no wax contamination in injection cylinder, nozzle, or reservoir



MPI Incorporated

165 Smith Street, Poughkeepsie, NY 12601
Tel: (845) 471-7630 Fax: (845) 471-2485
sales@mpi-systems.com
www.mpi-systems.com

Smart Machines, Smart Business, Smart Choice

